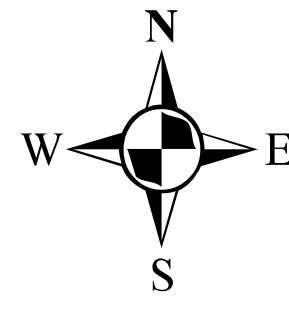
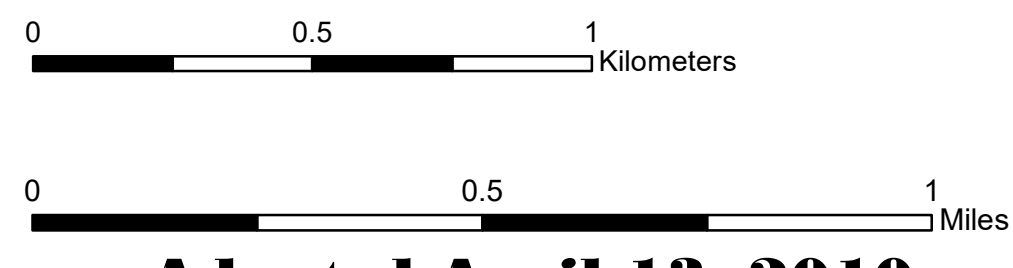


TOWN OF STAFFORD ZONING MAP

8903 ROUTE 237
P.O. BOX 52
STAFFORD, NY 14143



Adopted April 13, 2010
Amended: May 8, 2017
August 13, 2018
July 12, 2021

- Agriculture-Residential - A-R
 - Residential - R
 - Hamlet - H
 - Commercial - C
 - Industrial Park - IP
 - Industrial - I
 - 2021 Tax Parcels
 - Smart Growth Development Areas
 - Floodplain Overlay - FP
- Map Created by the
Genesee County Department of Planning
July 2022

